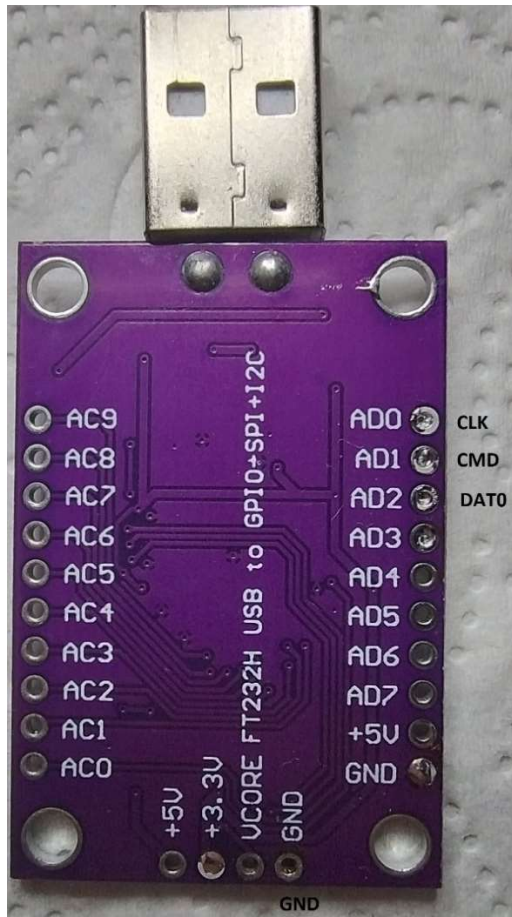


Connect the ft232h to the corresponding EMMC points (DO, CMD, CLK, GND) in circuit!!! Use cables as short as possible for cmd, clk, d0 (4cm works in my tests)
Also connect the cables after the resistors or caps to emmc.

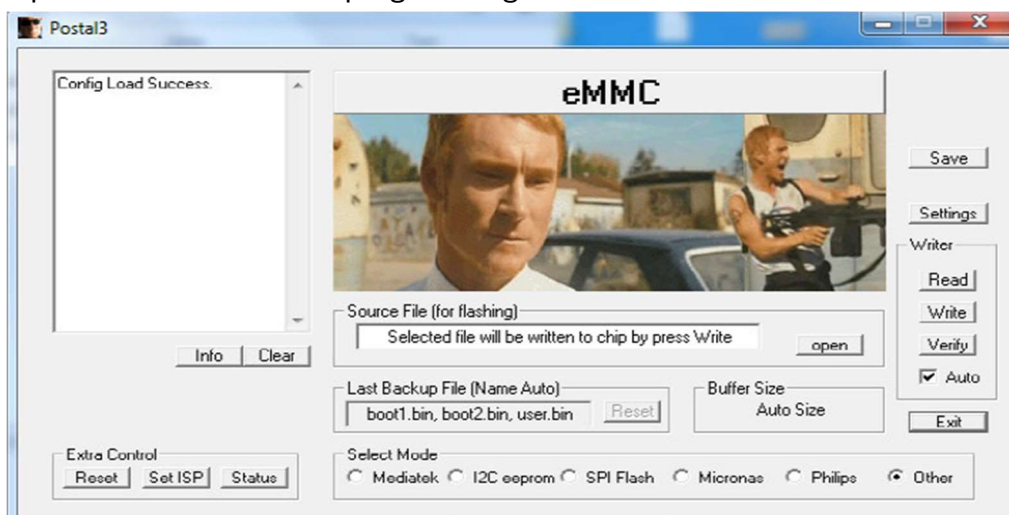
emmc=>cmd point=>resistor=>grab here the signal

Short the crystal of your device to prevent the soc from booting.

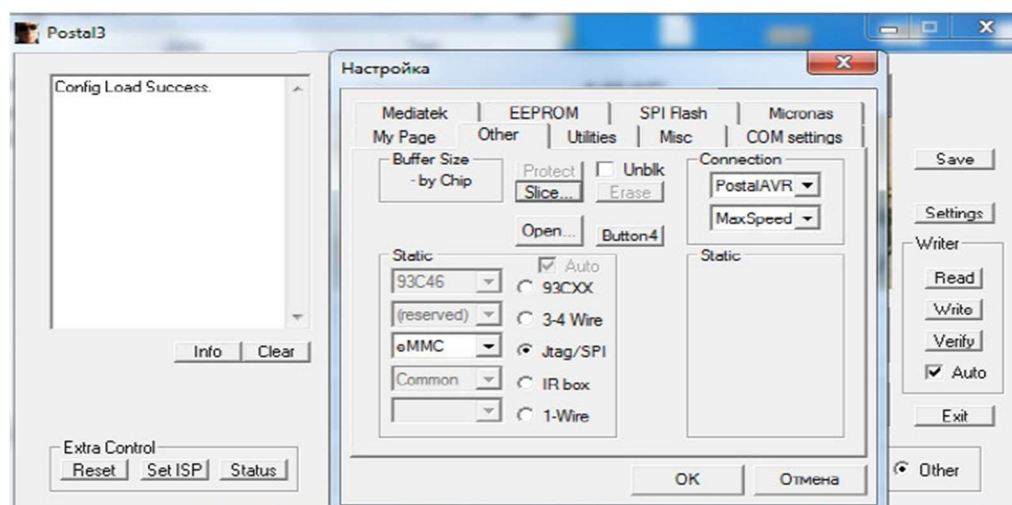
Theoretically, it's sufficient to short the emmc at startup (cmd, clk, d0). This causes the SOC to enter boot mode and prevent access to the emmc. This worked with a Fire TV. No guarantee that it will work with other devices!



Open the folder with the program. Right-click on the executable and run as admin.

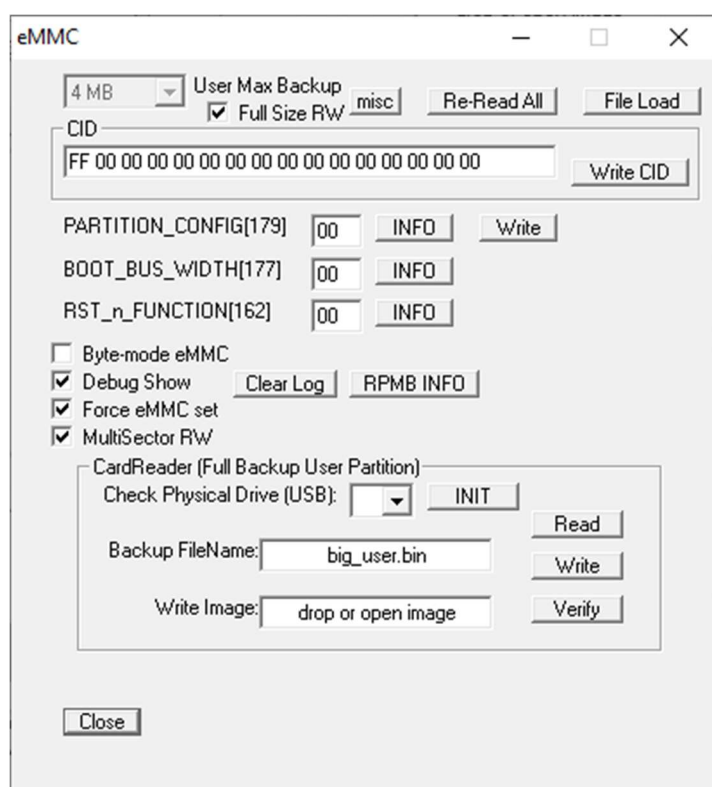


Click on Settings, a window will appear.

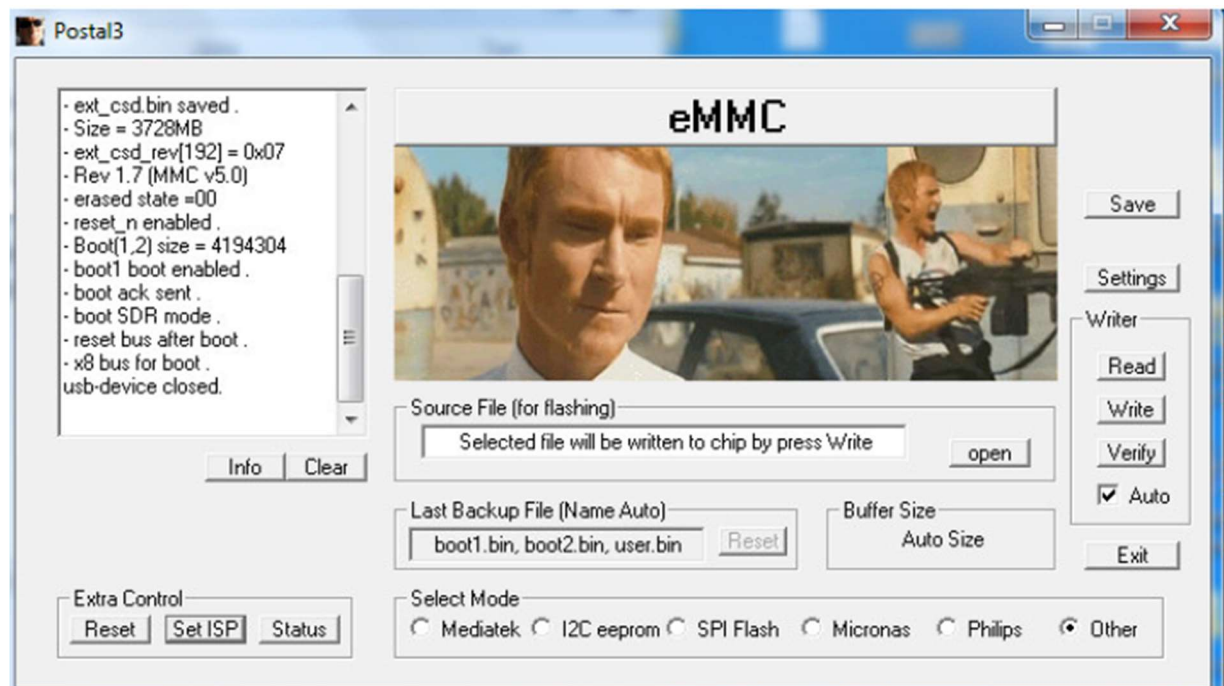


There should be such settings. Select Jtag/SPI, then Emmc. Set Max Speed.

Click the Open button. A window will appear. In it, check the boxes Force eMMC Set, MultiSector RW, Debug Show and Full Size RW



Click Close, then OK. Then Set ISP. We get a window.
You should see something similar in the output



click read and wait until it's dumped completely

